

Landing



| Product 产品 | Width 宽度 (mm) | Depth 深度 (mm) | Height 高度 (mm) | Fabric Color 布料颜色 | Material 物料 |
|------------------------------|------------------|------------------|-------------------|--|-----------------------------|
| 1-Seater Sofa 一座位沙发 | 1,120 | 970 | 770 | 62 Fabric Color Option and 4 Leather 62 种布料颜色及 4 种真皮选择 | Fabric and Leather 布料及真皮 |
| 3-Seater Sofa 三座位沙发 | 2,200 | 970 | 770 | | |
| Square Cushion 正方形抱枕 | 400 | 400 | - | 53 Fabric Color Option 53 种布料颜色选择 | Fabric 布料 |
| Rectangular Cushion 长方形抱枕 | 500 | 300 | - | | |
| | 450 | 200 | - | | |



3-Seater Sofa
三座位沙发



1-Seater Sofa
一座位沙发

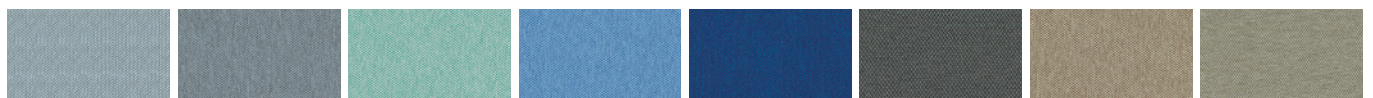
Material Option 物料选择

Seat Fabric 座椅布料

Era*

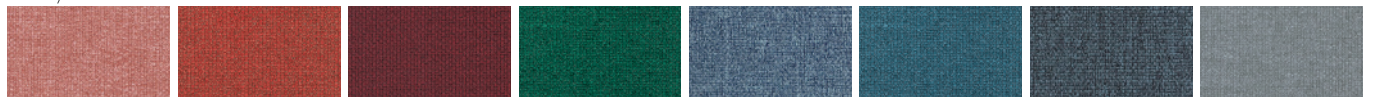


Calendar (CSE19) Date (CSE24) Turn (CSE26) Experience (CSE29) Lifetime (CSE03) Notation (CSE36) Rest (CSE37) Signature (CSE35)

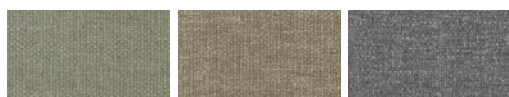


Youth (CSE39) Late (CSE43) Aeon (CSE20) Chapter (CSE08) Maturity (CSE40) Present (CSE13) Generation (CSE02) Prompt (CSE45)

Medley*



63064 (MD27) 63016 (MD09) 64102 (MD29) 68070 (MD32) 66144 (MD30) 67053 (MD31) 66010 (MD17) 66008 (MD15)



60003 (MD01) 61002 (MD04) 60167 (MD23)

Material Option 物料选择

Seat Fabric 座椅布料

Blazer

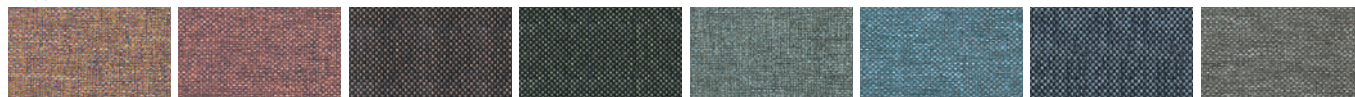


Stanford (CUZ2R) Barlborough (CUZ3D) Goldsmith (CUZ39) Scottsdale (CUZ3E) Barnard (CUZ2S) Latymer (CUZ33) Woodcroft (CUZ2Z) Marymount (CUZ3C)



Cardiff (CUZ1N) Glendalmond (CUZ62) Bromsgrove (CUZ35) Fairfield (CUZ47) Surrey (CUZ1E)

Rivet



Molten (EGL09) Forge (EGL12) Woodrose (EGL33) Hemlock (EGL34) Tensile (EGL20) Quench (EGL23) Crucible (EGL24) Gaivanise (EGL26)



Grey Brindle (EGL50)

Silex

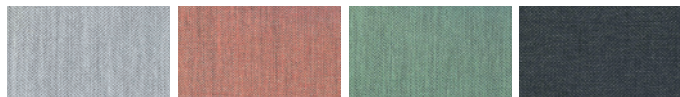


SX02 SX88 SX08 SX53 SX10 SX33 SX70 SX12



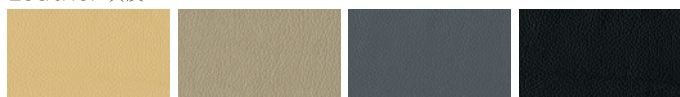
SX30

Vico



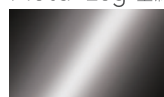
VC03 VC41 VC17 VC25

Leather 真皮



Butterscotch (VR04) Warm Grey (VR03) Steel (VR05) Black (VR01)

Metal Leg 金属脚



Gun Metal (GM)

Remark 备注:

Color variations may occur on soft copies or printed matters. Please refer to swatch cards or actual product samples for color selection.
颜色可能因电子档或印刷效果而出现差异，当选择颜色时，可参考色卡或真实样本。



Office & Showroom 分行及展厅

Shanghai 上海
Tel: (86) 21 6278 8888

Beijing 北京
Tel: (86) 10 8521 7588

Guangzhou 广州
Tel: (86) 20 3892 2422

Shenzhen 深圳
Tel: (86) 769 8203 1018

Dongguan 东莞
Tel: (86) 769 8203 1111

Hong Kong 香港
Tel: (852) 2828 6888

Singapore 新加坡
Tel: (65) 6817 8750

Customer Service Hotline 客户服务热线

Mainland China 中国大陆
Tel: (86) 800 820 6073 | (86) 400 686 8073

Hong Kong & Asia Pacific 香港及亚太区
Tel: (852) 2828 6000

www.lamex.com